

Professional
Powder Equipment
Manufacturer



Powder
Equipment



Milling
Technology



Powder
Materials

TENCAN

Product Brochure



DRUM BALL MILL SERIES

Large roll ball mill

QM

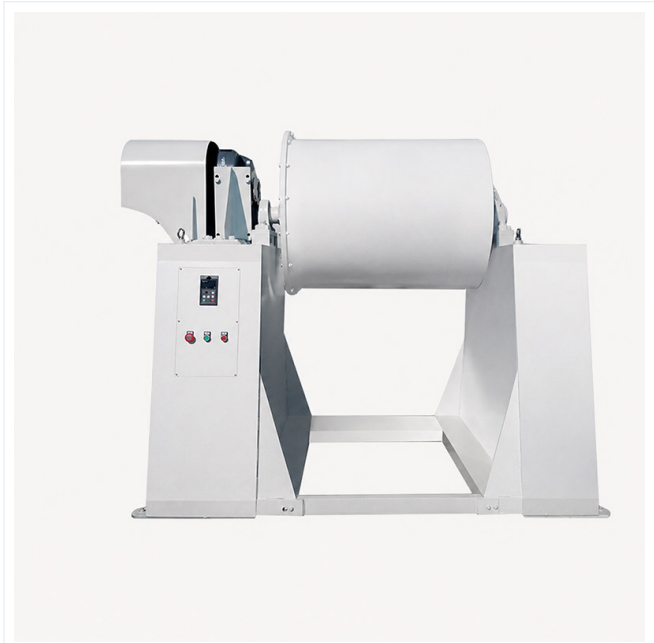
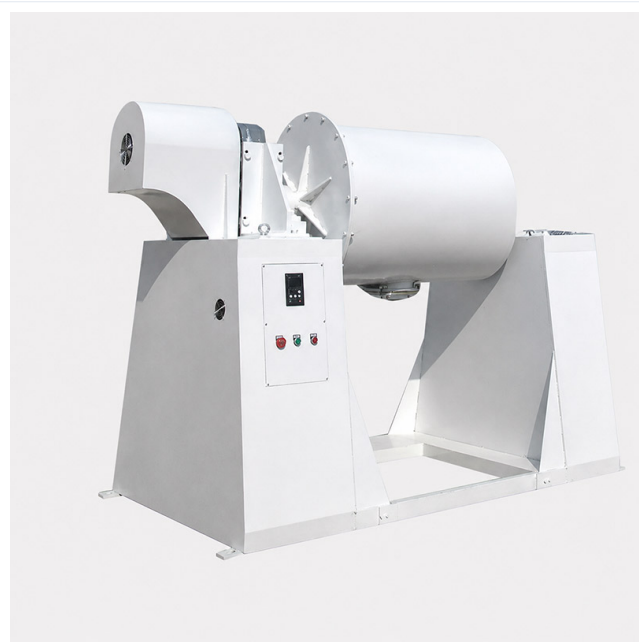
Large roll ball mill for efficient grinding, dispersing, and mixing of materials. Uses gravity-driven impact and shear for fine powder processing in mining, ceramics, and chemicals.

<https://www.planetaryballmills.com/products/grinding-series/drum-ball-mill/large-roll-ball-mill.html>



Product Overview

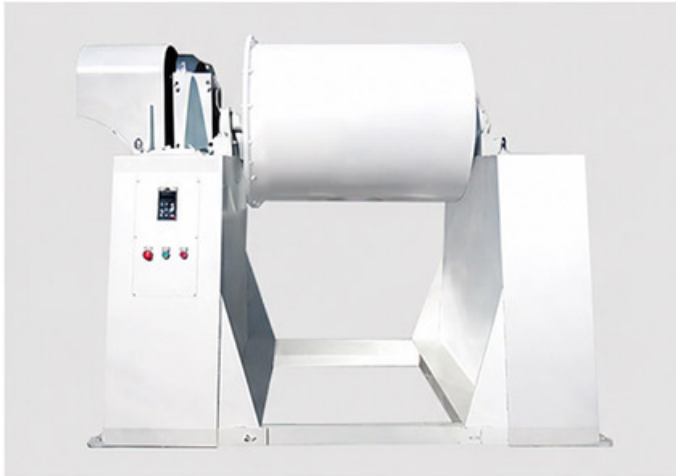
Large roll ball mill for efficient grinding, dispersing, and mixing of materials. Uses gravity-driven impact and shear for fine powder processing in mining, ceramics, and chemicals.





Product Introduction

When the drum ball mill is working, the grinding media and materials in the cylinder are raised to a certain height with the rotation of the cylinder, and then break away from the cylinder wall and fall along a parabola due to gravity. Grinding media and materials It rolls at high speed in the grinding tank, causing strong shearing, impact and rolling of the material to achieve the purpose of crushing, grinding, dispersing and emulsifying the material. □



Easy Operation

Equipped with automatic discharge; materials and grinding media can be separated automatically.

Control Panel

Simple and convenient control panel, easy to operate.



Grinding Drum

Optional inner linings include alumina corundum ceramic and zirconia ceramic.

Dust Cover

Uses a protective cover, ensuring high material purity and low contamination.



Grinding Series

Drum Ball Mill / Grinding Results



Before Grinding



After Grinding



Before Grinding



After Grinding

1. The machine operates smoothly, is highly efficient and energy-saving, and has low noise.;
2. It can be used for dry or wet grinding, can handle materials of various hardness, and can be used for coarse or fine grinding or mixing of materials. ;
3. With automatic unloading machine, materials and balls can be separated automatically, making discharging convenient ;
4. Using a protective jacket, the material has high purity and low pollution ;
5. Anti-wear, high grinding efficiency ;
6. Alloy steel, stainless steel, high wear-resistant polyurethane, corundum ceramic, zirconia and other linings can be used. The model can be selected from 25-2000L according to the user's output.

Technical parameters

| name | Volume(L) | Speed(rpm) | Loading capacity(kg) | Motor power(kw) | Feed particle size (mm) | Discharge particle size (μm) | Speed regulation method |
|----------|-----------|------------|----------------------|-----------------|-------------------------|------------------------------|---|
| QM-30L | 30 | 20~60 | 10.5 | 0.75 | ≤5 | ≥300 | Frequency conversion stepless speed regulation or fixed speed |
| QM-50L | 50 | 20~50 | 17.5 | 1.5 | ≤5 | | |
| QM-100L | 100 | 20~45 | 35 | 2.2 | ≤10 | | |
| QM-200L | 200 | 20~40 | 70 | 4 | ≤10 | | |
| QM-300L | 300 | 20~38 | 105 | 5.5 | ≤10 | | |
| QM-500L | 500 | 20~36 | 175 | 7.5 | ≤10 | | |
| QM-1000L | 1000 | 20~34 | 350 | 11 | ≤20 | | |
| QM-2000L | 2000 | 20~34 | 700 | 22 | ≤20 | | |

Note: 25-50L is single-phase 220V, and above 50L is three-phase 380V. Mill barrel material: carbon steel, stainless steel, can be lined with nylon polyurethane, polytetrafluoroethylene, corundum, etc.

1. Model description: QM-(Volume)-(A speed regulating type, B ordinary type) For example: QM-50-A is a 50L speed regulating roller ball mill;
2. Determine the machine model based on the grinding volume;
3. Select ball mill tanks (or different ball mill tank linings) and grinding balls of different materials according to the material properties.;
4. You can choose equipment with automatic unloading device and dust cover. Material and balls can be separated automatically, making discharging convenient □
5. The machine operates smoothly, is highly efficient and energy-saving, and has low noise. ;
6. It can be used for dry or wet grinding, and can handle materials of various hardnesses. It can be used for coarse or fine grinding or mixing of materials. ;
7. Using a protective jacket, the material has high purity and low pollution ;
8. Anti-wear, high grinding efficiency ;
9. Alumina corundum ceramic, zirconia ceramic and other linings can be used, and the model can be selected from 25-2000L according to the user's output.

Accessories & Customization

Accessories

Grinding jars, heating elements, sample holders, control modules and other matching accessories can be selected according to the product configuration.

Customization

For voltage, capacity, chamber size, process temperature or application requirements, please contact TENCAN for a suitable configuration.